



In this Issue

**Dolgarrog Power Station
Pipe line Survey**
P.2

IRIS Reporting
P.3

**La Collette Power
Station**
P.4

Welcome to our Autumn Newsletter

Our Services & Qualifications

Services

Coatings Condition Surveys
Painting Works Inspection
Specification Writing
Project Consultancy
Paint Sampling & Analysis
Failure Analysis
Project Management & Support

Qualifications

All of our inspectors are ICorr / NACE qualified and have many years experience our range of certificates include:

ICorr/NACE level 2 or 3 Inspectors
Confined Space Tickets
ICI/LU Entry Permits
PTS Cards
NEBOSH
BOSIET
IRATA Rope Access
CHAS Approved
ISO 9001 Accredited
RISQS Achilles LINK UP Approved
Institute of corrosion sustaining member

2017 has been an incredibly successful year, not only have we grown as a business, but we have also seen our inspectors travel further, and work on a more diverse range of projects than ever.

Early in the year saw one of our level 3 inspectors travel as far as China to work on the Royal Peridot cargo tank refurbishment at Zoushan IMC (main picture and insert). Our inspector was responsible for carrying out quality assurance checks on the application of Marine Line advanced polymer coatings for Norstar shipping.

The summer also saw our specialist rope access and confined space inspection teams work on a variety of diverse projects. These included, travelling to the channel islands to inspect the external steelwork on a power station, and the successful completion of a 600m pipeline coating survey at Dolgarrog power station. The latter of which involved a specialist five-man rope access and confined space inspection team. Both of these projects demonstrate our capabilities to take on the most challenging projects and complete them safely on time.

We continue to work on numerous projects for local Councils, Highways England, Network Rail and the Underground, as well as long term projects such as the Thames Estuary Asset Management Programme and the APT Jetty refurbishments.

We are also pleased to be working with Paint Technology Solutions on the new IRIS contractor reporting system which is now complete. We hope you find something of interest in the newsletter, and thank you for taking the time to read it.

Jan Patterson - Director/M ICorr

Dolgarrog Power Station



Client: Innogy RWE Group
Project: Low Head Pipeline
Coating survey
Location: Dolgarrog

Paint Inspection Ltd are pleased to have completed a successful coating condition survey of the Low Head Pipeline at Dolgarrog Power Station in Conwy, North Wales.

The power station was built to supply the Dolgarrog Aluminium Works in 1907 and substantially extended in 1925. The 3km pipeline supplies the hydro power station with water from the Coedty Reservoir.

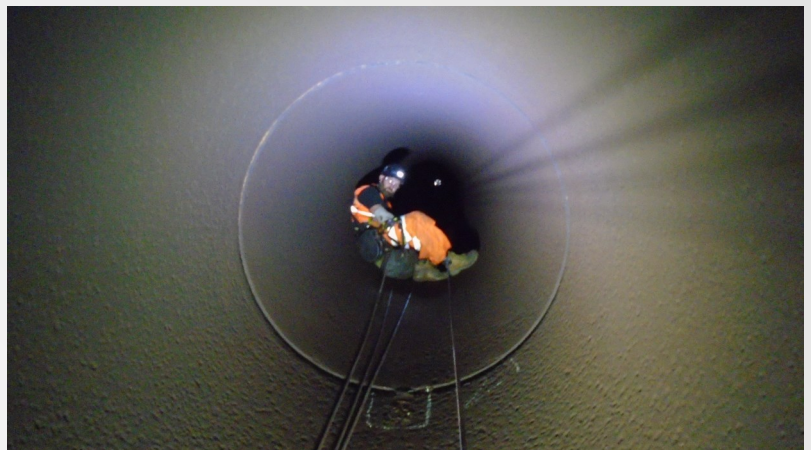
The section of Pipeline which was being inspected was 600 meters long and 1.2m in diameter and classed as a confined space. In addition to this, large sections of the pipe line were at a substantial incline. and therefore, Paint Inspections Ltd's specialist rope access confined space team took on the challenge of surveying the pipe.

In total, a five man team co-ordinated the access and egress, provided rescue cover and carried out the internal inspection of the pipeline.

The inspection required sections of the pipe to be cleaned and visually inspected as per ISO 4628 to check for degradation of the coatings and corrosion. Adhesion testing and Dry film thickness checks were also carried out so an assessment could be made on the suitability for overcoating and patch repairing.

The data collected from the ninety sections of pipe was then collated into a detailed survey report with recommendations for repair work..

For more information on our specialist confined space inspection teams contact admin@paint-inspection.co.uk



Intelligent Reporting

The Future of Reporting

Paint Inspection Ltd have been working with Paint Technology Solutions on the development of the new IRIS Contractor reporting system. The cloud based software has been designed specifically for painting contractors to improve the recording of quality control documentation and data in industry.

The contractors Apps enables supervisors and charge hands to record data at the workface. It removes the need for paper and stores all the information in the secure cloud, keeping all the information safe.

The system enables ambient temperatures, surface cleanliness checks, batch numbers and applications sessions to be recorded as works progress.

All of the quality data is then automatically compiled into a report which acts as the quality assurance documentation that is required when either manufacturing a product or carrying out maintenance work on an existing asset. For more information visit: www.iris-reporting.com



Client: Bam Nuttall

Location: Germany, MCE Aschersleben

Paint Inspection Ltd are currently working on the construction of pile sections for a new jetty being built on the river Thames. The piles form part of the new jetty which will allow large tankers to deliver fuel to a storage site on Canvey Island.. The facility allows for storage of up to 243,000 tonnes of fuel. Paint inspection ltd have been involved in carrying out quality assurance inspections at MCE Aschersleben, which is a specialist fabrication and Engineering company in Germany.



Client: Sefton Council

Location: Southport Pier

Paint Inspection Ltd continue to work for Sefton Council on the Southport Pier refurbishment. The project, which involves bi-weekly inspections to ensure conformance with the specification, is due for completion in November 2018 and includes blasting and painting the 68 spans which make up the pier.



Client: Wood group

Location: Greater Gabbard Wind Farm

Paint inspection Ltd have once again completed the coating condition surveys of the Galloper and Inner Gabbard sub-stations on the greater gabbard wind farm. This round of surveys represented the 4th year of a five-year survey package. The survey reports enable the degradation of coatings to be monitored as well providing a scope for repair and maintenance works.



La Collette Power Station

Client: States of Jersey
Project: Energy from Waste Plant Coating Survey
Location: Jersey

Paint Inspection Ltd have recently completed a coating condition survey of La Collette Power Station in Jersey. The survey, which took five days including travel, demonstrates how mobile and responsive our in-house rope access team is. The three-man inspection team could fly out with all the rope access and inspection equipment that was required to complete the survey. The access arrangements also included a built in rescue system in line with IRATA guidelines.

The survey included a visual inspection and testing of the external steel columns and trusses which are exposed to a hostile C5M environment. The rope access methods enabled a safe system of work to be put into place so the inspectors could abseil down the sides of the building and climb up the truss steelwork. Therefore, a 100% visual inspection could be carried out in line with ISO 4628 to assess the degradation of the coatings. Adhesion testing and dry film thickness (DFT) testing was also carried out.

Back in England the data collected was put into a detailed survey report with a scope of works and recommendations for repair work.

To find out more about our rope access capabilities contact our head office on 01329 236092.



Thank you for taking the time to read our newsletter, we hope you have found something of interest.

If you do have any further questions relating to something in the newsletter, or a project you would like us to get involved in. Please do not hesitate to contact one of our four regional offices or alternatively visit our website at:

www.paint-inspection.co.uk

Head Office
61 High Street
Fareham
Hampshire
PO16 7BG

South West Office
Sowton Business Centre
Capital Court
Bittern Road
Exeter
EX2 7FW

North East Office
Unit 7 Evans Business Centre
Lingfield Way
Yarm Road Industrial Estate
Darlington
DL1 4QZ

North West Office
Unit 5 Albert Edward House
The Pavillions
Ashton-on-Ribble
Preston
PR2 2YB

Tel: 0845 463 8680

Tel: 0845 463 8994

Tel: 0845 463 8687

Tel: 0845 463 8684